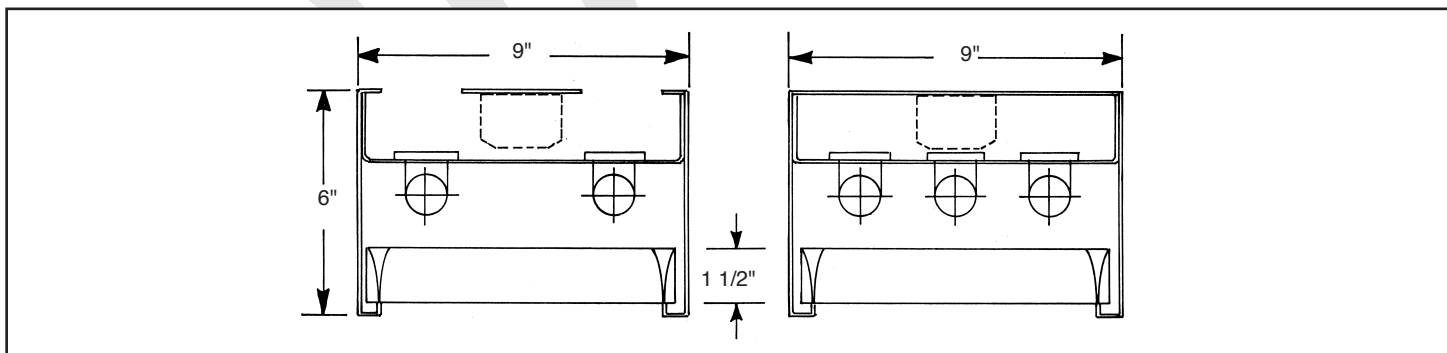
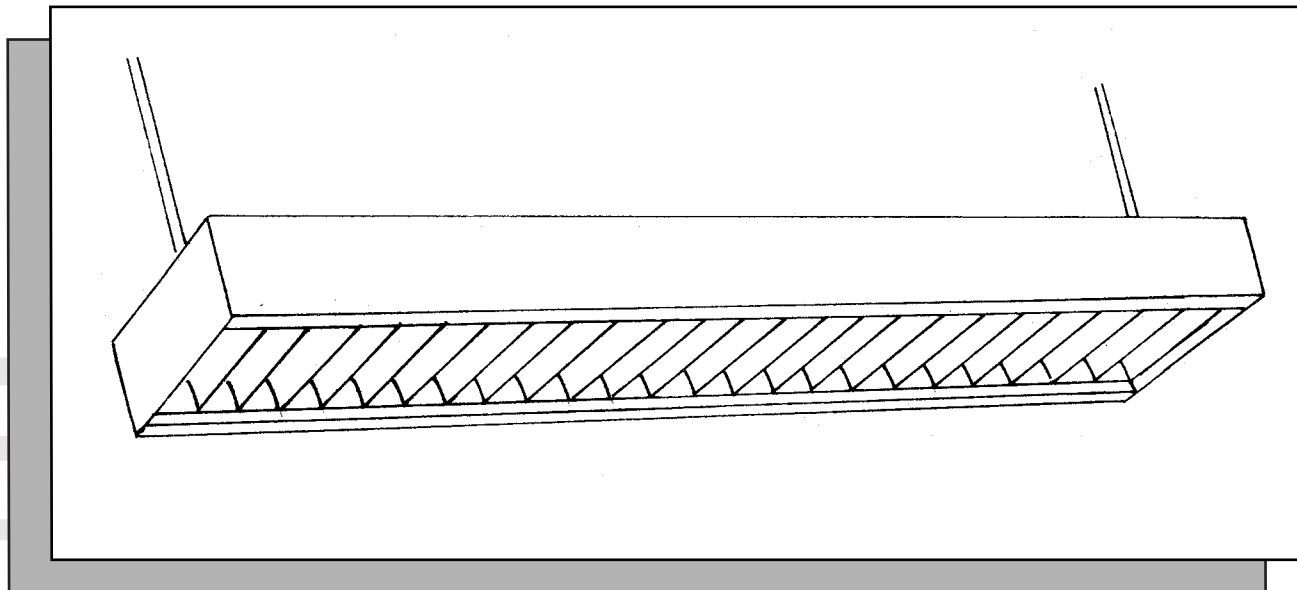
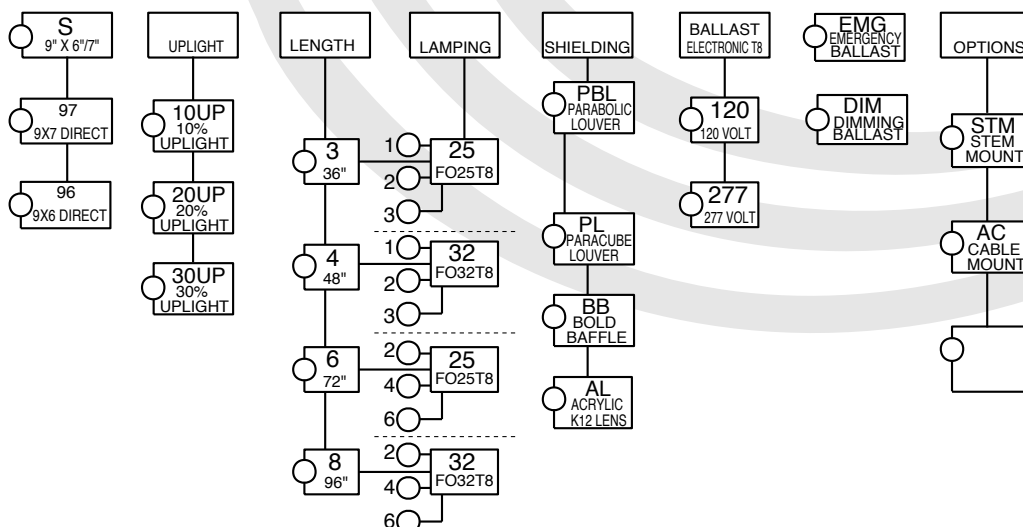


# 96 P PROFILE SERIES

DIRECT/INDIRECT PARABOLIC



## ORDERING DATA



CONSULT FACTORY FOR T5 TWIN TUBE LAMPS

# Specifications

**DESCRIPTION:** High efficiency, high visual comfort, and attractive appearance make it ideal for architectural spaces. Rectilinear shape, direct, and semi-direct distribution make this a versatile lighting instrument. Typical uses are classrooms, library stacks, office landscapes, and corridors.

**HOUSING:** Precision die formed 20 gauge cold rolled steel. Welded construction for rigidity. The socket plates and ballast cover are easily accessible for servicing. Surface and pendant mounting available.

**SHIELDING:** Direct or Semi-direct has choices of low glare, low iridescence, high efficiency semi specular parabolic louver, champagne gold, paracube louver, bold louver, or prismatic lens. Consult factory for options not listed.

**BALLAST:** Electronic T8 or Twin Tube 40w, Class "P", CBM-ETL certified. Consult factory for magnetic T12 ballast

**FINISH:** All steel parts are treated with the HASCO "Perm-O-Last" multi-stage rust inhibitive process. Standard finish is a durable baked white enamel with a minimum reflectance of 90%. Consult factory for other colors and finishes. Fixture is post painted.

**LABELING:** All HASCO fixtures are U.L. approved and IBEW union made.

## PHOTOMETRICS: 96 P PROFILE SERIES DIRECT/INDIRECT PARABOLIC COEFFICIENTS OF UTILIZATION, ZONAL CAVITY METHOD EFFECTIVE FLOOR CAVITY REFLECTANCE 0.20

MULTIPLIERS  
L acrylic louver  
1 lamp x1.10

PBC paracube louver  
1 lamp x .66  
2 lamp x .55

B bold louver  
1 lamp .81  
2 lamp .71

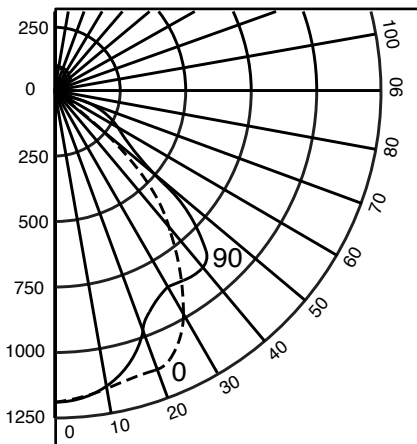
CEILING		80			50			30			
WALL		70	50	30	10	50	30	10	50	30	10
RCR											
	0										
	1	51	51	51	51	43	43	43	40	40	40
	2	45	43	42	41	39	38	38	37	36	36
	3	39	35	33	31	33	34	33	34	33	32
	4	36	32	29	27	30	28	26	28	26	25
	5	34	29	26	24	27	25	23	26	24	22
	6	31	28	23	21	24	22	19	23	21	19
	7	29	26	21	21	22	20	18	21	19	18
	8	26	21	18	19	21	19	17	19	18	17
	9	24	19	18	16	18	15	14	17	15	13
	10	22	19	16	14	16	14	12	15	13	11

**Luminaire: Formed Steel**  
**Ballast: Valmont E232P1120601**  
**Lamping: [2] F32T8 @2900 lumens**  
**Mounting: Pendant**

**HASCO File #101845/ITK**  
**Prepared by: P. Marshall**  
**Catalog number: 97-1001-4-232-120 PB**

**Data subject to change**  
**Please consult factory for**  
**additional information.**

ISOCURVE



CANDLE POWER SUMMARY

VERT ANGLE	0	90
0	1210	1210
10	1112	1196
20	1085	1025
30	956	974
40	650	902
45	655	884
50	572	535
60	36	273
70	6	72
80	4	2
90	1	1
100	13	11
110	28	25
120	41	38
130	55	52
135	64	66
140	68	74
150	76	82
160	85	89
170	91	91
180	91	91

ZONAL LUMEN SUMMARY

ZONE	LUMENS	%LAMP	%FIXTURE
180-90	280	4.88	11.45
90-0	2136	40.5	90.20
180-0	2423	41.2	100