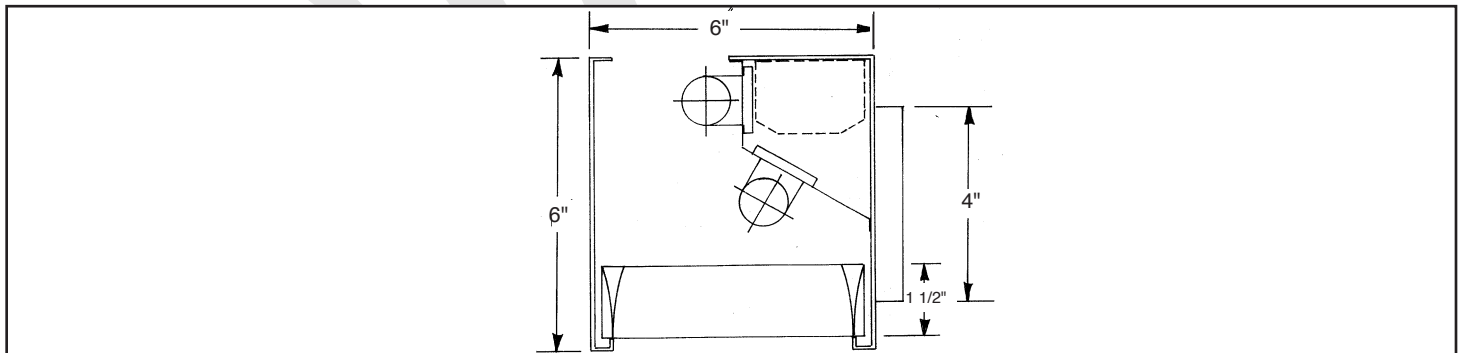
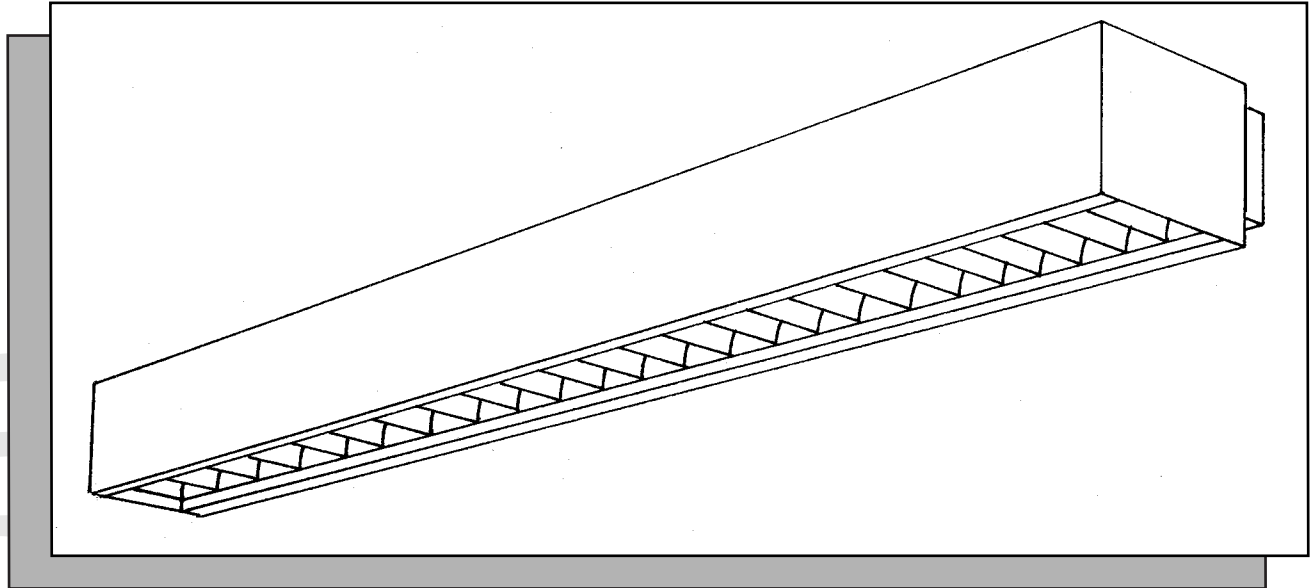
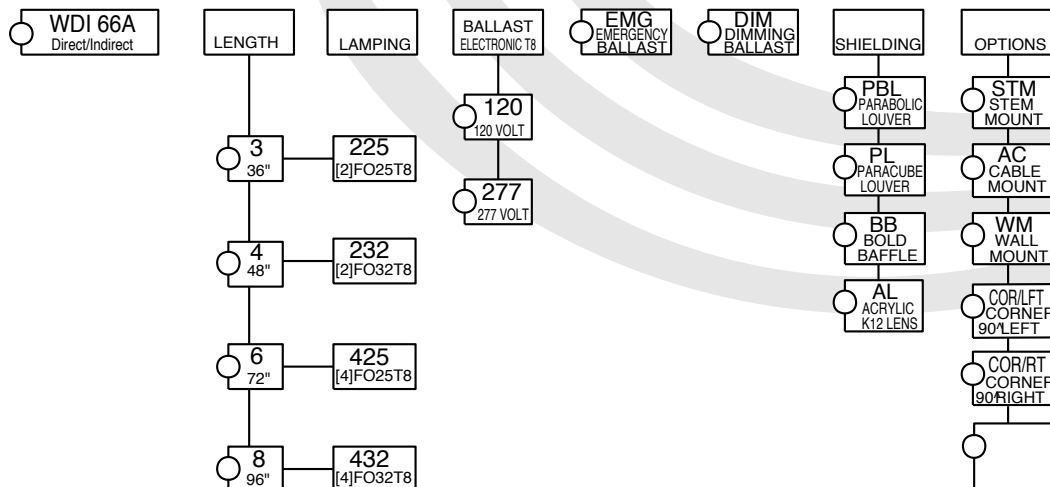


# WDI 66 A Profile Series

Wall Direct/Indirect Asymmetric Parabolic



## ORDERING DATA



# Specifications

**DESCRIPTION:** High efficiency, high visual comfort, and attractive appearance make it ideal for architectural spaces. Rectilinear shape, hidden lamp images, and simultaneous wall/ceiling wash enlarge and enhance any interior. Good choice to illuminate chalk board, telephone kiosks, VDT spaces, and corridors.

**HOUSING:** Precision die formed 20 gauge cold rolled steel. Welded construction for rigidity. The socket plates and ballast cover are easily accessible for servicing. Surface and pendant mounting available.

**SHIELDING:** Choices of low glare, low iridescence, high efficiency semi specular parabolic louver, champagne gold, paracube louver, bold louver, or prismatic lens for direct and direct/indirect versions. Consult factory for options not listed.

**BALLAST:** Electronic T8 or Twin Tube 40w, Class "P". CBM-ETL certified. Consult factory for magnetic T12 ballast

**FINISH:** All steel parts are treated with the HASCO "Perm-O-Last" multi-stage rust inhibitive process. Standard finish is a durable baked white enamel with a minimum reflectance of 90%. Consult factory for other colors and finishes. Fixture is post painted.

**LABELING:** All HASCO fixtures are U.L. approved and IBEW union made.

## PHOTOMETRICS: WDI 66 A PROFILE SERIES Wall Direct/Indirect Asymmetric Parabolic COEFFICIENTS OF UTILIZATION, ZONAL CAVITY METHOD EFFECTIVE FLOOR CAVITY REFLECTANCE 0.20

MULTIPLIERS  
L acrylic louver  
1 lamp x1.10

PBC paracube louver  
1 lamp x .66  
2 lamp x .55

B bold louver  
1 lamp .81  
2 lamp .71

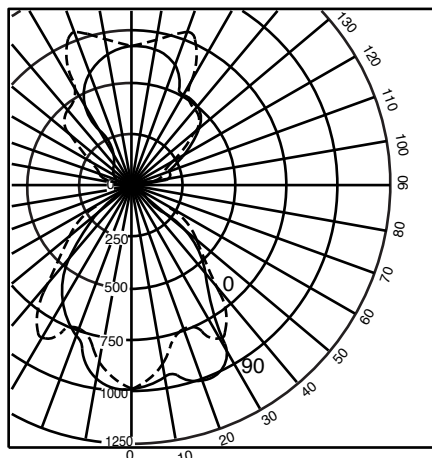
CEILING WALL RCR	80				50			30		
	70	50	30	10	50	30	10	50	30	10
0	67	67	67	67	52	52	52	43	43	43
1	63	59	59	56	47	46	45	39	38	38
2	54	56	49	47	42	40	39	36	34	33
3	53	48	44	41	38	36	34	32	31	29
4	49	43	39	35	35	34	29	25	23	22
5	45	38	34	31	31	28	26	22	21	19
6	42	35	30	27	28	25	24	20	19	17
7	39	31	27	23	25	22	21	19	17	15
8	36	28	24	20	24	20	18	17	15	13
9	33	25	21	18	22	17	15	15	13	12
10	31	23	19	16	19	16	13	14	13	12

**Luminaire: Formed Steel**  
**Ballast: Valmont E232P1120G01**  
**Lamping: [2] F32T8 @2900 lumens**  
**Mounting: Surface**

**HASCO File #111845/ITL**  
**Prepared by: P. Marshall**  
**Catalog number: WDI66A-4-232-120 PBL**

**Data subject to change**  
**Please consult factory for additional information.**

ISOCURVE



CANDLE POWER SUMMARY

VERT ANGLE	0	90
0	968	968
10	862	958
20	741	884
30	643	754
40	674	556
45	552	227
50	359	28
60	201	7
70	28	4
80	4	1
90	2	0
100	74	64
110	144	167
120	228	279
130	347	386
135	409	435
140	468	488
150	574	562
160	548	621
170	477	646
180	671	671

ZONAL LUMEN SUMMARY

ZONE	LUMENS	%LAMP	%FIXTURE
180-90	2128	34.2	56.21
90-0	1598	28.3	42.77
180-0	3479	61.6	100